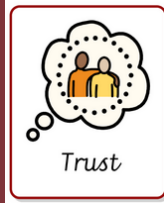


# Great Gaddesden CE (VA) Primary School

Email: [admin@greatgaddesden.herts.sch.uk](mailto:admin@greatgaddesden.herts.sch.uk) Tel: 01442 255734  
Headteacher: Mr Matt Beach

This month's value is:



## Weekly update

Dear Parents/Carers,

Welcome back to the second half of the Summer term!

Back in the Autumn term, I sent out a survey to all parents to complete asking for your feedback on what we do well and what would make our school even better. We were delighted with the very positive feedback and I have some updates on how we have listened to your suggestions. Below I have covered the general themes and actions taken:

<i>You said</i>	<i>We did</i>
<b>More opportunities for discos, fun events and more for Year 6 leavers</b>	<ul style="list-style-type: none"> <li>We have had two whole school discos</li> <li>We have had a 'Yes Day', Challenge 25, dressing up for World Book Day &amp; a Summer Party/Fete is planned for later this term</li> <li>Leavers hoodies have continued and we plan to take Year 6 to Chessington in July</li> </ul>
<b>More concerts, trips and whole school events</b>	<ul style="list-style-type: none"> <li>Introduced whole class instrumental teaching in KS2</li> <li>We have our first Musical Soiree on 25<sup>th</sup> June</li> <li>We have started a school choir/singing group</li> <li>Across this year, we have completed over 15 trips including a planned whole school trip. We now have a whole school curriculum enrichment map</li> </ul>
<b>Changing pick up location and extending after school club</b>	<ul style="list-style-type: none"> <li>All children are now picked up from the playground. This has supported a strong community feel</li> <li>After school club runs until 6pm three days per week</li> </ul>
<b>Barriers outside school gates/road markings</b>	<ul style="list-style-type: none"> <li>I met with Terry Douris (County Councillor) about this, shared concerns and what we would like to support and improve this.</li> <li>The Change Team plan to write letters in support of this.</li> </ul>
<b>A named pastoral worker</b>	<ul style="list-style-type: none"> <li>We have developed a Inclusion and Pastoral Team this year with Mrs Aikman as our SENDCo and Mrs Redman as our named Pastoral Support Assistant.</li> </ul>

### In this issue:

- Update from Headteacher- 1
- Religious life & visit- 2
- Learners of the week & Forest school- 3 & 4
- Spotlight on Learning- 5
- Dates & Community information- 6

### Wrap around care

Monday, Wednesday & Thursday 8:00am-6:00pm  
Tuesday 8:00am- 4:30pm  
Friday (breakfast club only)

To extend your booking to 5:30 or 6:00pm, please contact the school office

From September, we plan to share with you each half term more information about what your child will be learning. The parent partnership is really important to us and I hope you feel that your feedback has been responded to as we continue to work as a community to make Great Gaddesden the best school possible.

Kind regards,

**Mr M. Beach - Headteacher**

'Treat others exactly as you would like to be treated yourself.' (Luke 6:31)

# Religious life

This week, we introduced our value of the month 'Trust'.  
In collective worship, we listened to the story of Daniel and the Lion's Den and how he trusted God to help him. We discussed the link between faith, trust and a sense of comfort.

This week's Big Question was:  
**How do we trust God?**

**"We can trust God by following his example and the 10 commandments"**

**"We trust God to protect us from bad things"**

**"By praying to God every day and believing in God"**

**"By praying and believing in God's love every day. We trust in God so he can protect us from bad things"**

**"We can trust God by praying to ask for his trust and also believing in the love of God"**



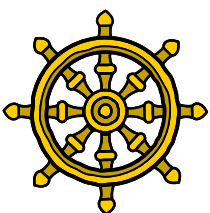
*"So Daniel was taken up out of the den, and no manner of hurt was found upon him, because he believed in his God."  
Daniel 6:16-23*

## Visit to Amaravati Monastery



Year 5&6 visited the local Buddhist monastery this morning.

This supported their RE learning about Buddhism and enabled them to find out more about the monastery. It was a very beautiful and tranquil place of worship to visit.





# Learners of the week



This week, the following learners below were chosen by their class teacher for demonstrating **excellent learning behaviours**:

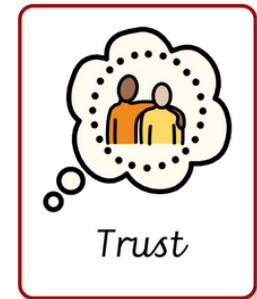
Early years	<b>Frankie</b>
Year 1/2	<b>Elijah</b>
Year 3/4	<b>Kaiden</b>
Year 5/6	<b>Dottie</b>

## Headteacher awards:

- Athena
- Amelia
- Reed

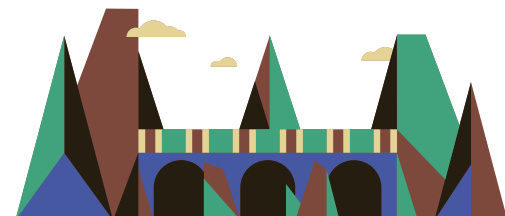
This week, the following learners below were nominated for demonstrating '**trust**' (our value of the month):

Early years	<b>Max</b>
Year 1/2	<b>Kauan</b>
Year 3/4	<b>Julie</b>
Year 5/6	<b>Jess</b>



# Forest school

Year 3 and 4 had an Anglo-Saxon themed forest school session linked to their history learning this week! Our focus was on what kinds of clothing the Anglo-Saxon people would have worn. We had a go at weaving our own cloth using 'mini looms' and we also dyed some cloth using natural materials (turmeric/plant roots and blackberry juice) In an attempt to keep out of the torrential rain, we also built dens to shelter in!





## Spotlight on Learning



The spotlights on learning this half term will focus on a different subject each week. This week, we hear about Maths from Mrs Lilley who leads this subject across the school.

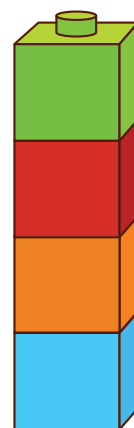
At Great Gaddesden School, we aim to offer a Maths curriculum that is creative and engaging. Our children are encouraged to develop the necessary skills to make them "deep thinkers" acquiring Maths skills that can be recalled quickly and transferred and applied in different contexts. Maths is the foundation for understanding the world and we want our children to know the purpose behind their learning and to apply their knowledge to their everyday lives.

**Aims:** Here at Great Gaddesden School, we follow the White Rose scheme. This allows our children to revisit topics several times over the two year teaching cycle allowing their knowledge to embed.

- We ensure that Maths is taught in creative and engaging lessons using a wide array of Mathematical manipulatives to aid and support our children in their learning.
- We aim to encourage the deepest of learning for our children so that their knowledge can be transferred and applied in many contexts including other subjects e.g. Science and Art and their everyday lives.
- Maths is widely promoted across the school and our classrooms have working walls that the children can utilise to support their learning and provide extra challenge.

Our aim is to ensure that the three core areas of the national curriculum are covered in all our lessons: fluency, reasoning and problem solving. We offer the children the opportunity to have varied and frequent practice of their maths skills with the focus on their ability to recall and apply their knowledge rapidly and accurately.

At Great Gaddesden School, we ensure that our Maths curriculum is progressive and allows children to develop fundamental skills in working mathematically, questioning, analysing, reasoning and how to apply maths to a variety of topics. All children are provided with the skills and opportunities to demonstrate improvement to achieve their personal best. We aim to build problem-solvers of the future and build resilience in our children; essential skills they can use in all aspects of their learning.



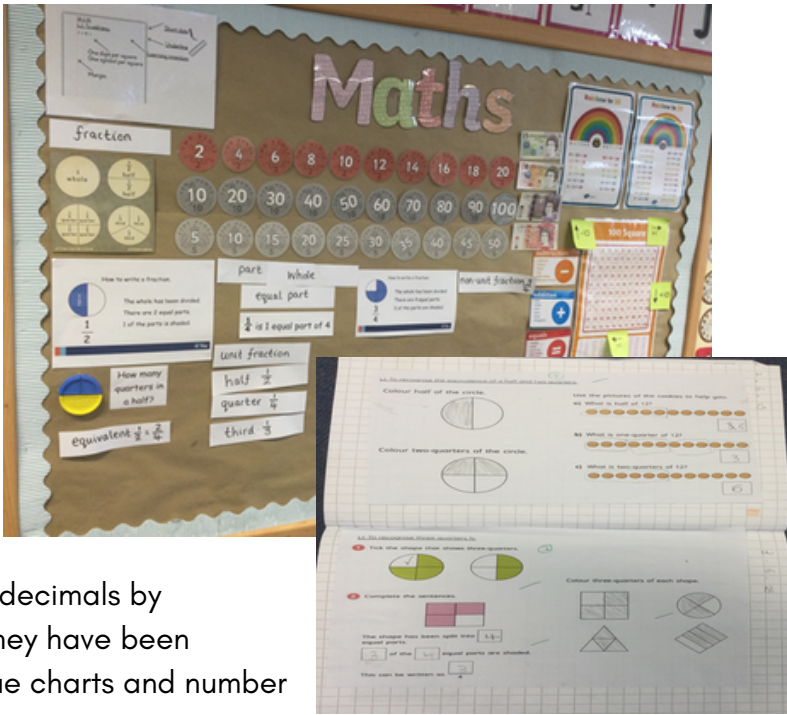


'Treat others exactly as you would like to be treated yourself.' (Luke 6:31)

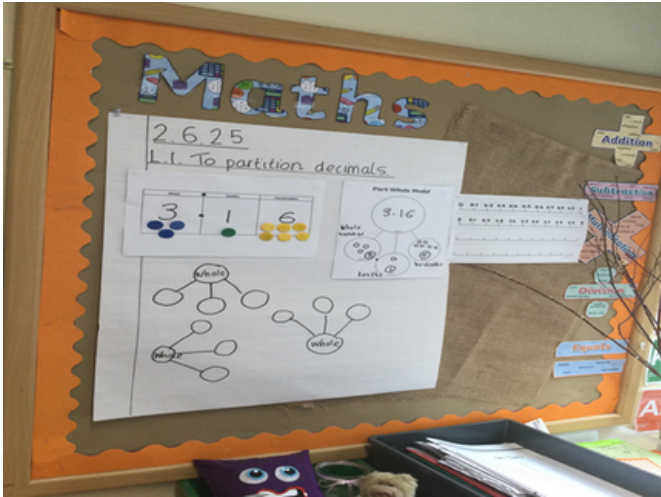
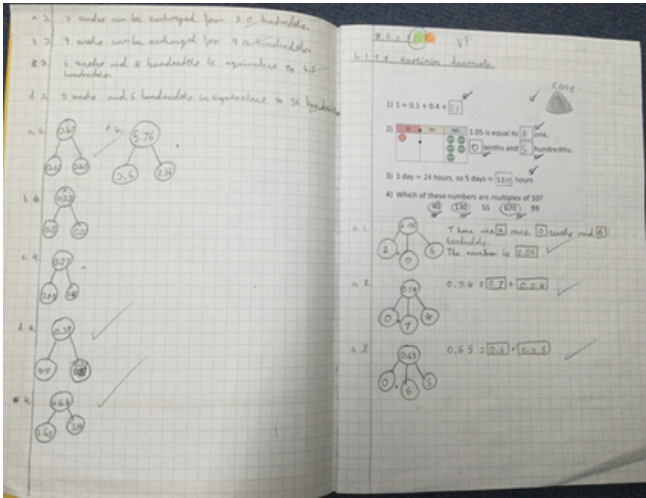
**Early Years** have been developing their understanding of shape using giant blocks and reasoning using mathematical language.



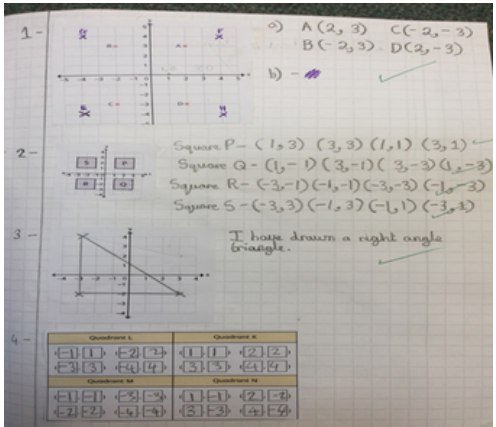
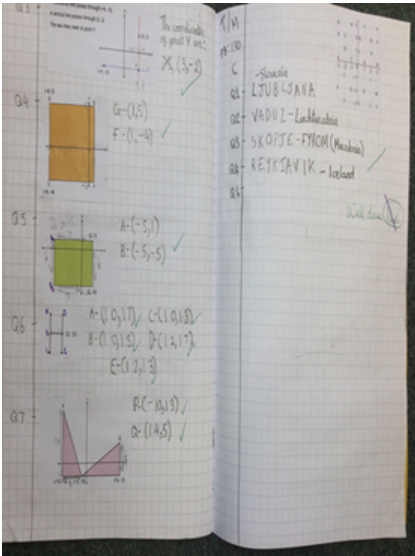
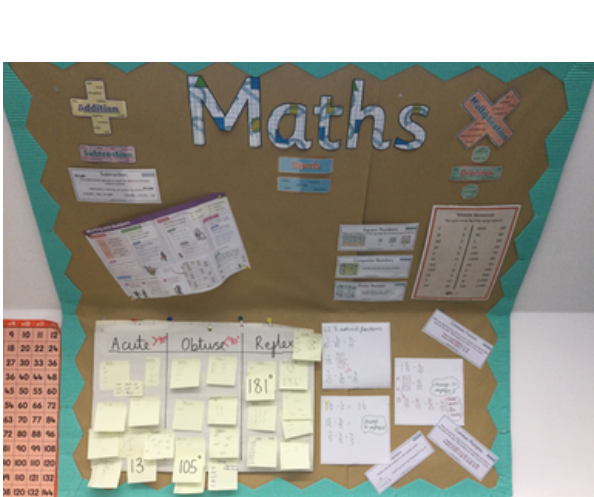
**Year 1&2** have been using playdough to help develop their understanding of fraction; finding equal parts and fractions of shapes and numbers.



**Year 3&4** have been deepening their understanding of decimals by comparing and ordering decimals to 1 decimal place. They have been supported in this by using part whole models, place value charts and number lines.



**Year 5&6** have been focussing on position and direction. They have studied coordinates on all four quadrants and investigated reflecting and translating shapes

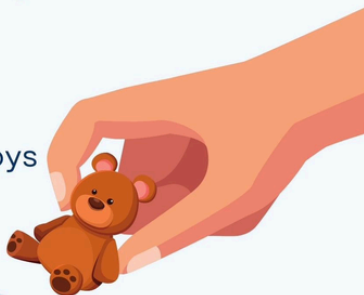


# Community information

## FOGGS SUMMER PARTY

We are looking for donations!

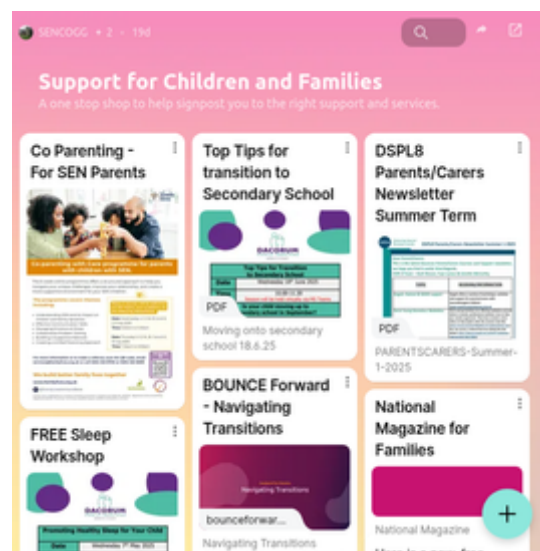
Teddy's  
Soft Toys  
Unwanted Toys  
Lucky Dip



Please start collecting for our Summer Party on Friday 11<sup>th</sup> July and hand donations in to school office for FOGGS to collate!

More info to follow!

Thank you!



## Attendance

**OUR OVERALL ATTENDANCE THIS WEEK IS: 98%**

**OUR OVERALL ATTENDANCE SO FAR THIS YEAR IS: 94%**

Our attendance has been very good this week.

We had two days this week with **100% attendance**.

Well done everyone!

## Key dates

June

13<sup>th</sup> EYFS Forest School (afternoon)  
16<sup>th</sup> Y5/6 Forest School (afternoon)  
w/c 23<sup>rd</sup> Small schools week  
23<sup>rd</sup> Whole School Trip to Woburn  
25<sup>th</sup> Musical Soiree 4-5pm (date change)  
26<sup>th</sup> Sports Day (Weather Dependent)  
(lunch picnic followed by the afternoon of events)  
27<sup>th</sup> INSET Day (School closed for Pupils)

July

2<sup>nd</sup> Y3/4 Forest School (afternoon)  
7<sup>th</sup> Early Years Stay & Play/Welcome Meeting (for new families joining Nursery & Reception) 2-3:00pm  
8<sup>th</sup> Y6 Trip to Chessington  
8<sup>th</sup> Y1/2 Forest School (afternoon)  
18<sup>th</sup> End of Year Reports sent out  
22<sup>nd</sup> Y6 Leavers Service at 9am (St John's Church)  
22<sup>nd</sup> Term Ends @1:30pm  
23<sup>rd</sup> Occasional day

01442 255734

admin@greatgaddesden.herts.sch.uk

Church Meadow, Great Gaddesden, Hemel Hempstead, HP1 3BT